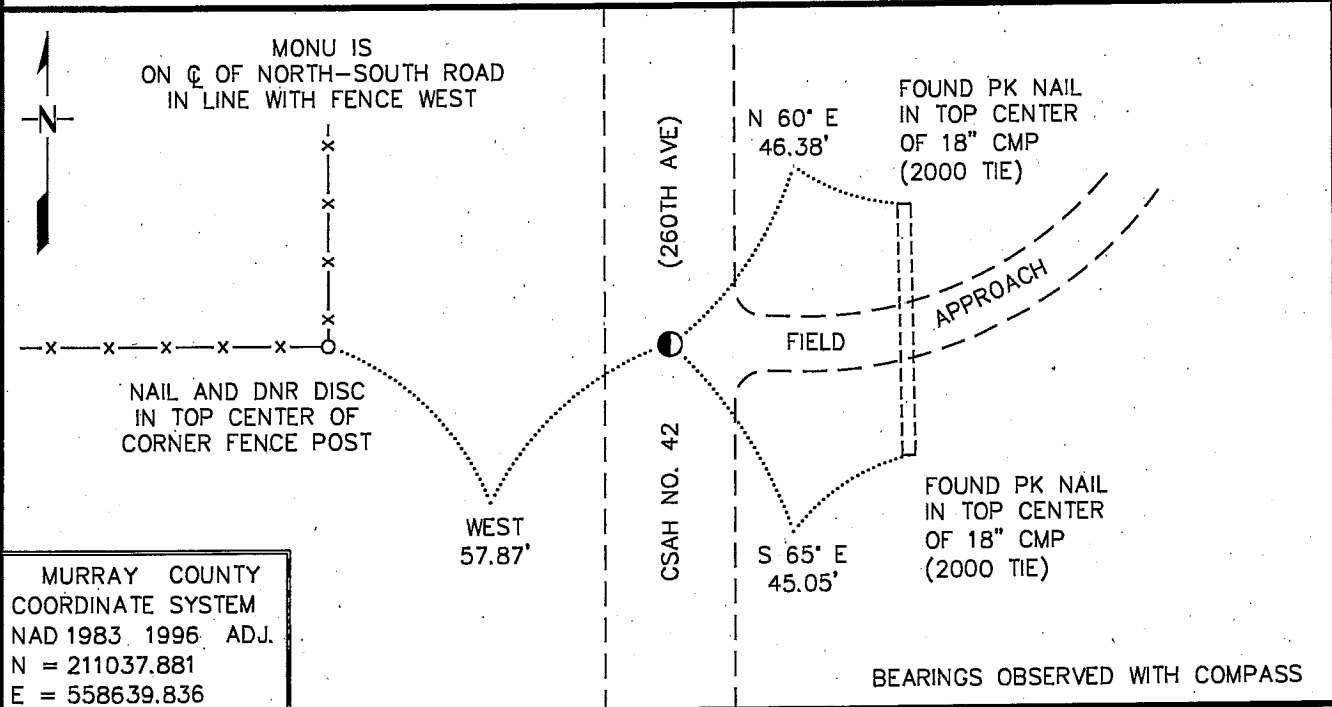


CERTIFICATE OF LOCATION OF GOVERNMENT CORNER

NORTHEAST Corner of Section 20 , Township 108 N , Range 39 W
5th Principal Meridian, State of Minnesota, County of MURRAY

At the corner location shown on the sketch:

- On 8/11/2009 found a 3/8" DIAMETER REBAR, DOWN 0.3'
DATE
- left monument as found, lowered monument, removed monument (explain)
- On 8/11/2009 Placed a PLASTIC CAP STAMPED "MN DNR LS 17003"
DATE
ON TOP OF FOUND REBAR



Statement of evidence for this corner location is on back of this page. 9/1/2009
TRA00706.00.00.01

I certify that this document was researched and prepared by me or under my direct supervision.

SIGNATURE *Kevin W. Shipp* DATE 9/14/09 License Number 17003

Title: Land Surveyor Professional Engineer County Surveyor County Engineer

The DNR Division of Lands and Minerals contacted the following for survey information:

Minnesota History Center in St. Paul
Murray County Recorder's Office
Murray County Highway Engineer's Office
Zieske Land Surveying, Inc. of Windom
Bueltel-Moseng Land Surveying of Marshall

1861 U.S. General Land Office notes, obtained from the Minnesota History Center, show the corner marked with a wood post with pits and mound.

1901 Surveyor's Record Book A, Pages 240, 255, 256, 259 and 260, obtained from the County Recorder's Office, contains a survey by D.L. Bighorn, Redwood County Surveyor, which record was made on June 12, 1915, by J.R. Johnston, Murray County Surveyor, from original plat on file in the office of the Town Clerk of Holly Township. Survey shows corner but a description of what kind of monument was found or set is not given. The corner is shown:

2648.5 feet from the north quarter corner of Section 21
2651.0 feet from the east quarter corner of Section 17
2628.8 feet from the north quarter corner of Section 20
2642.0 feet from the east quarter corner of Section 20

The above information is also contained in a Surveyor's Record Book, obtained from the County Highway Engineer's Office.

1977 Murray County Highway Department section corner information website, states that a concrete monument was located at corner, 1.5 feet below grade, a ½" x 12" iron pin was set above the monument and the following ties were taken:

N&C in post, southeast, 40.81 feet
N&C in corner post, west, 40.11 feet
N&C in brace post, northeast, 47.64 feet

The following is also noted:

"call for more details"

No Murray County Highway Department section corner information website, states that a
Date concrete monument was located at the corner, with the following ties:

tack in corner fence post, west, 40.0 feet
tack in telephone pole, southwest, 66.5 feet
fence line 1 foot north of corner

The following is also noted:

"call for more details"

No A page in a Surveyor's Record Book, obtained from the County Highway Engineer's Office,
Date shows a concrete stone at the corner, but does not indicate if it was found or set. The following ties are shown to the corner:

R.P. tack in corner post, west, 40.0 feet
R.P. tack in telephone pole, southwest, 66.5 feet
fence line 1 foot north of corner

No A page in a Surveyor's Record Book, obtained from the County Highway Engineer's Office,
Date shows that a concrete monument was found at the corner, 1 ½ feet below grade, a ½" by 12" iron pin was set above the monument and the following ties were taken:

R.P. N&C in post, southeast, 40.81

N&C in corner fence post, west, 40.11

N&C in brace post, northeast, 47.64

1999 Construction Plan Sheet Number 19 (Metric Plan) for County State Aid Highway Number 42, obtained from the County Highway Engineer's Office, shows a symbol for corner but does not indicate what kind of monument was found or set. The corner is shown:

at Station 11+279.814

in a cut section of 0.84 meters (2.76 feet)

2000 March 21, Murray County Highway Department section corner information website, states that a 3/8" rebar was set for the corner after regrade, with the following ties:

PK nail, top of culvert, southeast 45.05 feet

PK nail, top of culvert, east-northeast, 46.38 feet

rebar, west, 153.57 feet

rebar, west, 246.85 feet

rebar, west, 341.18 feet

The following is also noted:

"call for more details"

2009 August 11, the DNR Division of Lands and Minerals found a 3/8 inch diameter rebar, 0.3 of a foot below the surface, at corner. The rebar was found to be:

on the centerline of north-south CSAH Number 42

in line with a fence west

2649.61 feet from the north quarter corner of Section 21

2632.65 feet from the east quarter corner of Section 17

Searched for and found record ties as shown on the sketch of reference ties.

Consulted with LaMoine Meyer, Holly Township Clerk, about the 1901 survey by D.L. Bighorn, and he said that the survey information that the Township has is the same as what's on file at the County Recorder's Office.

Analysis of the above information led the DNR Division of Lands and Minerals to conclude that the found 3/8 inch diameter rebar, which was set in 2000 by the County Highway Department after a regrade, which most likely was set in the location of a ½" by 12" iron pin which was set in 1977 over a found concrete monument, marks the location of the corner. A plastic cap stamped "MN DNR LS 17003" was set over the found rebar and ties were taken to it as shown on the sketch of reference ties.